



COMMUNITY CLIMATE ACTION



DAVIE PHILIP - davie@cultivate.ie

- **COMMUNITY RESILIENCE MANAGER AT CULTIVATE: THE SUSTAINABLE IRELAND COOPERATIVE.**
- **COORDINATOR OF THE COMMUNITY CLIMATE COACH ERASMUS + PROJECT**

Co-funded by the
Erasmus+ Programme
of the European Union



COMMUNITY CLIMATE COACHES



The **Community Climate Coaches** project is an **ERASMUS + funded** project developing a system to train, support and enable community facilitators, mentors and animators across Europe to coach communities in taking action on climate and biodiversity issues.





Co-funded by the
Erasmus+ Programme
of the European Union



community
climatecoaches

Consortium Partners

- Cultivate, the Sustainable Ireland Coop, (Ireland)
- Centre for Ecological Learning, (Luxembourg)
- The Permaculture Association, (Britain)
- ECOLISE, the European network of community-led action. (Belgium)
- FCIENCIAS.ID, Lisbon University, (Portugal)
- Suomen Kylät RY (The Finnish Villages Association)
- Hrvatska Permakultura (Croatia)
- Resilience Earth SCCL (Spain)



community
climatecoaches

Community-led action will need effective facilitation.

The project aims to build the competency of community catalysts to increase awareness and understanding of climate change in local communities and design and deliver inclusive and creative community interventions.

Coaches will be equipped to support the just transition of local bioregions and support the aims of the SDGs, the European Green Deal and national and territorial priorities, through the creation of local Community Climate Resilience Action Plans that will help identify practical and relevant projects to make local communities and their environments more sustainable and resilient to adversity.

The project will help contribute to meeting climate targets and making the transition to a low carbon, just and resilience economy and society.

<https://communitiesforfuture.org/community-climate-coaches/>



community climatecoaches



Transformation competencies

Facilitation competencies

Coaching competencies

Sustainability competencies

Scaling & deepening competencies



COMMUNITIES
FOR FUTURE

Mapping and Research System - which helps you see who else you can connect with, learn from, collaborate with, or be inspired by.





community climatecoaches

The Community Climate Coach (CCC) toolkit is a curated collection of resources and methods for facilitators and coaches supporting local climate action. It offers a range of approaches for fostering community involvement and facilitating transformative change.

A curated set of tools, methods, and a pathway to empower facilitators, coaches and community animators to support, catalyse and link initiatives across geographical areas and sectors, and assist citizens in connecting to nature and place, decarbonising, and building increased solidarity to face the converging challenges we face today.



LOCAL CLIMATE COACHES

FACILITATING COMMUNITY-LED ACTION



Rialtas
na hÉireann
Government
of Ireland

Tionscadal Éireann
Project Ireland
2040



Cultivate along with **2 Local Tipperary Development Companies** and the **Tipperary Public Participation Network**, have been supported through the Irish Government's Community Climate Action fund to pilot a local version of the Community Climate Coach project in County Tipperary in rural Ireland.



LOCAL CLIMATE COACHES

Facilitating Community-Led Climate Resilience



Winds of change: what is needed for paradigm change

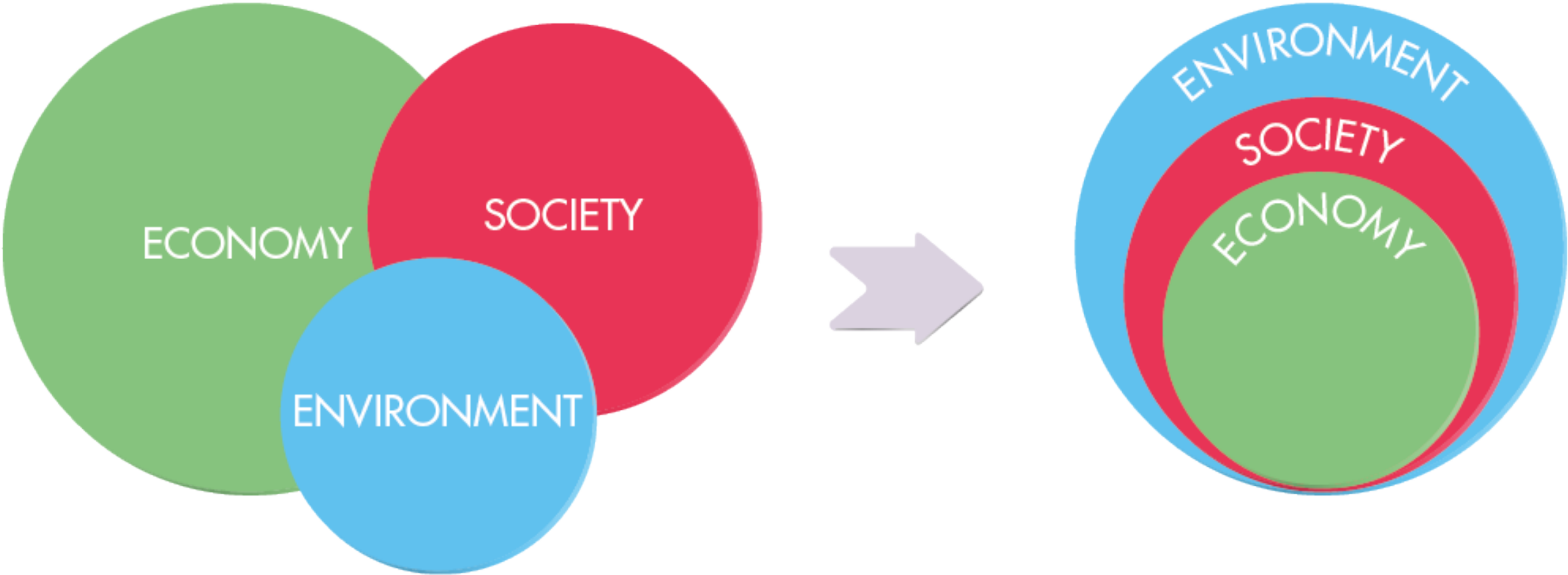
Whole Systems Thinking

Ecological Limits

A Just Transition

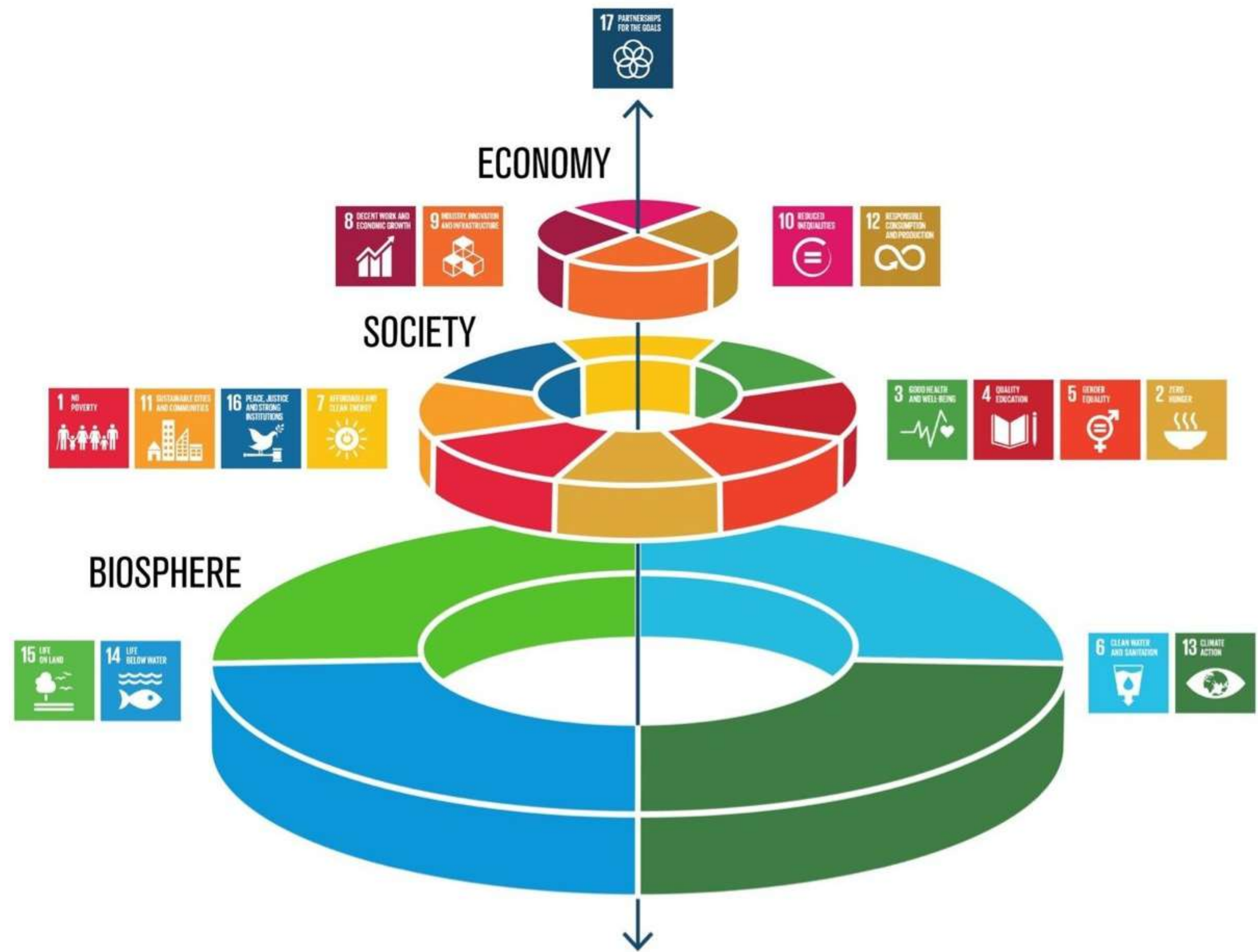
Community Resilience

FROM REDUCTIONISM TO WHOLE-SYSTEMS THINKING – NESTED INTERDEPENDENCE



By changing from reductionism to a whole-systems thinking, we recognise the interdependence of the environment, society and the economy. There is no thriving economy without society, and no society without the environment. It is a very complex ecosystem that we depend upon.

WHOLE SYSTEMS THINKING



Graphics by Jerker Lohrantz/Azote



Social and planetary boundaries

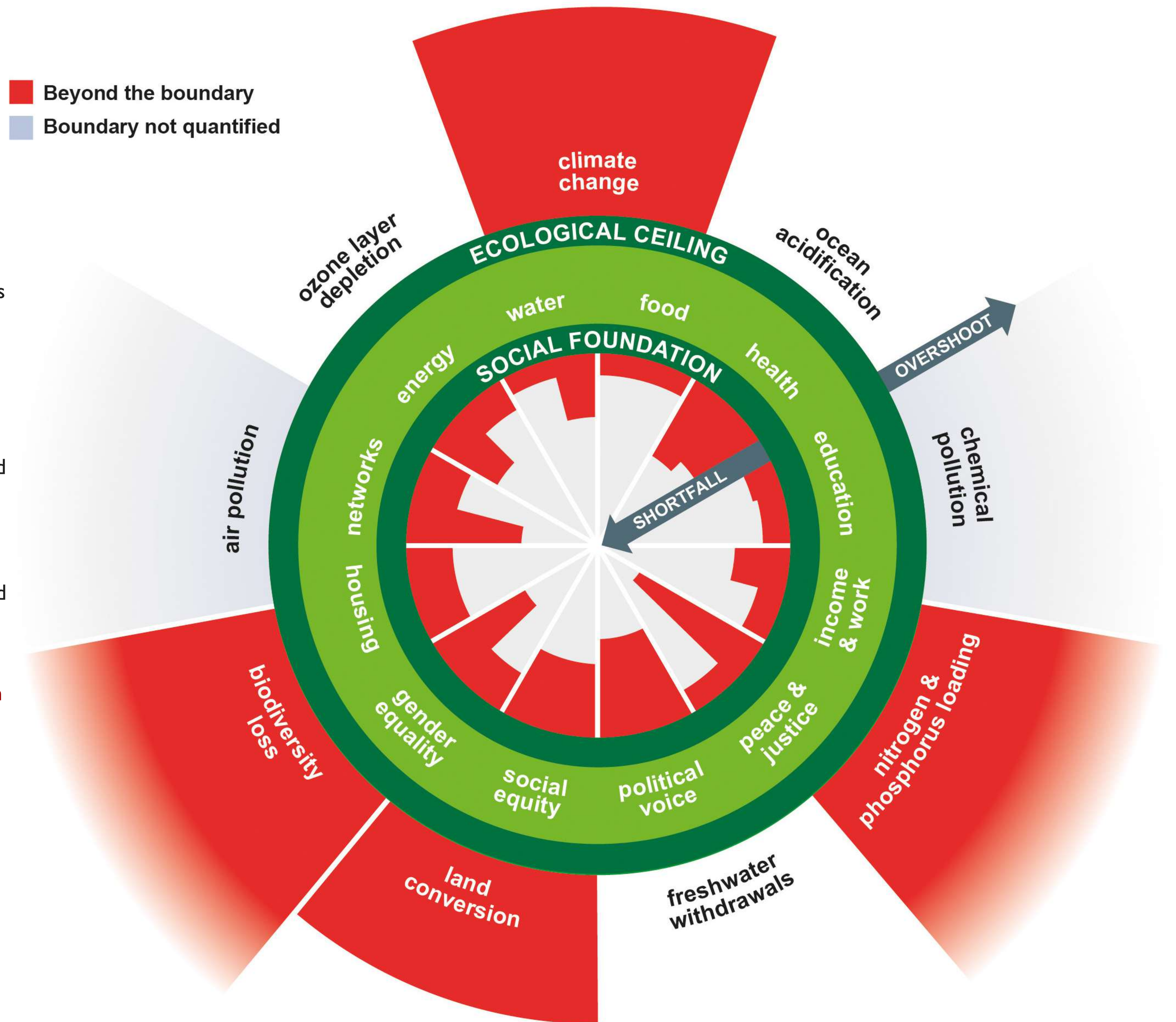
Humanity's 21st century challenge is to meet the needs of all within the means of the planet.

In other words, to ensure that no one falls short on life's essentials (from food and housing to healthcare and political voice), while ensuring that collectively we do not overshoot our pressure on Earth's life-supporting systems, on which we fundamentally depend – such as a stable climate, fertile soils, and a protective ozone layer.

The Doughnut of social and planetary boundaries is a playfully serious approach to framing that challenge, and it acts as a compass for human progress this century.

If you want to look deeper into the Doughnut, and Doughnut Economics, see [Doughnut Economics Action Lab](#) for more detail on what it means for transforming our economies

Planetary boundaries is a concept involving [Earth system processes](#) that contain environmental boundaries. It was proposed in 2009 by a group of [Earth system](#) and [environmental scientists](#), led by [Johan Rockström](#) from the [Stockholm Resilience Centre](#)



A photograph of empty supermarket shelves, likely in a grocery store. The shelves are metal with a green decorative border. Price tags are visible, including one that says "2.39". The text "COMMUNITY RESILIENCE" is overlaid in large white letters across the center of the image.

COMMUNITY RESILIENCE

Community resilience is the existence, development and engagement of community resources to thrive in an environment characterised by change, uncertainty, unpredictability and surprise.

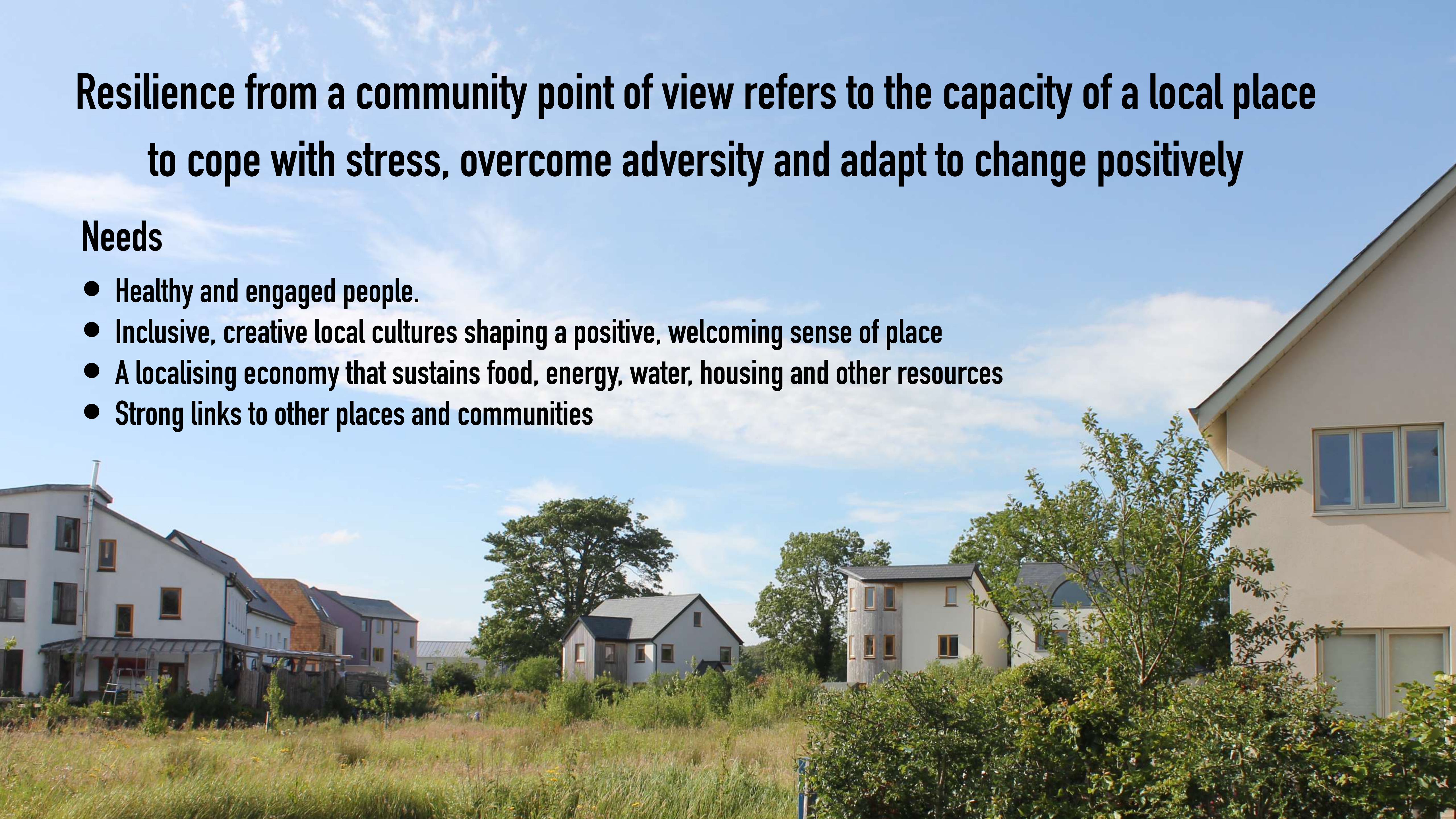


VUCA – Volatility, Uncertainty, Complexity and Ambiguity

Resilience from a community point of view refers to the capacity of a local place to cope with stress, overcome adversity and adapt to change positively

Needs

- **Healthy and engaged people.**
- **Inclusive, creative local cultures shaping a positive, welcoming sense of place**
- **A localising economy that sustains food, energy, water, housing and other resources**
- **Strong links to other places and communities**





COMMUNITY CLIMATE ACTION



DAVIE PHILIP - davie@cultivate.ie

- **COMMUNITY RESILIENCE MANAGER AT CULTIVATE: THE SUSTAINABLE IRELAND COOPERATIVE.**
- **COORDINATOR OF THE COMMUNITY CLIMATE COACH ERASMUS + PROJECT**